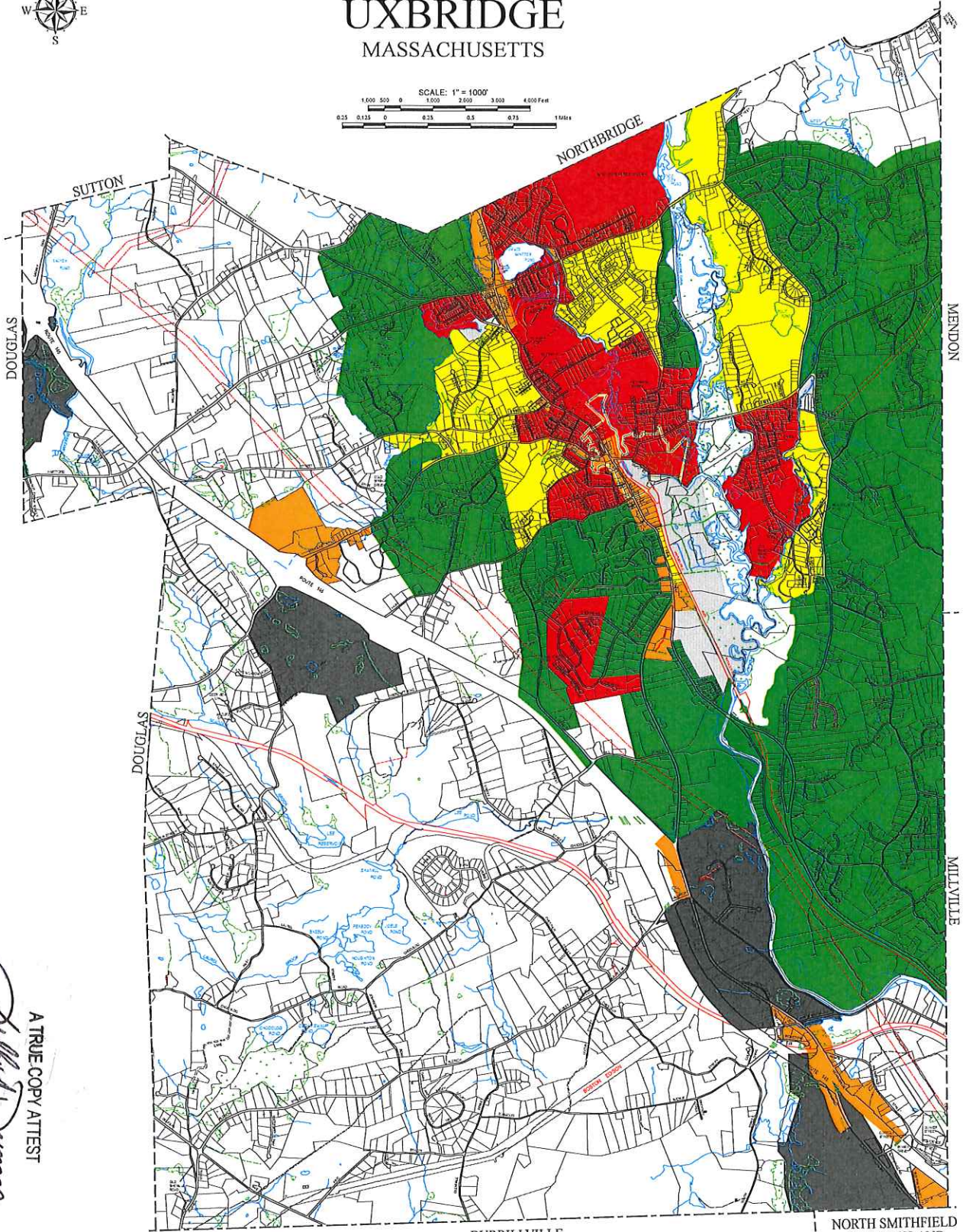
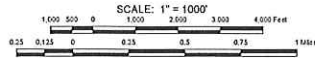


PROPOSED INDUSTRIAL  
ZONING MAP  
CHANGES  
**UXBRIDGE**  
MASSACHUSETTS



A TRUE COPY ATTEST  
*Dolly A. Damico*  
TOWN CLERK, UXBRIDGE

**NOTES**

THIS MAP IS BASED ON THE TOWN OF UXBRIDGE, MASSACHUSETTS HIGH RESOLUTION MAPS PREPARED BY 2013 BY CAI TECHNOLOGIES. IT IS INTENDED FOR REFERENCE AND NOT FOR CONSTRUCTION PURPOSES ONLY.  
2013 GIS SOURCE DATA: MASSACHUSETTS GIS 2013-2014 GIS DATA CURRENT TO 2013.  
2013 GIS UPDATES:  
ARTICLE 8 SPECIAL TOWN MEETING JAN 24, 2013  
ARTICLE 11 FALL TOWN MEETING NOV 18, 2013  
ARTICLE 14 MEETING APR 20, 2014  
ARTICLE 20 MEETING NOV 20, 2017  
ARTICLE 10 MEETING MAY 13, 2018  
ARTICLE 11 FALL TOWN MEETING OCT 10, 2018  
ARTICLE 18 FALL TOWN MEETING NOV 20, 2019  
ARTICLE 11 FALL TOWN MEETING OCT 10, 2019  
PROPERTY LINES CURRENT TO JANUARY 1, 2018

**LEGEND**

- PROPERTY LINE
- - - IN CONTENTION
- - - TOWN LINE
- - - ROAD
- - - SECONDARY ROAD
- - - PRIVATE ROAD
- - - RIGHT OF WAY
- - - TRAIL
- WATER
- WETLAND
- - - RAILROAD
- - - UTILITY

**ZONING**

- AGR - Agricultural
- BUS - Business
- INDA - Industrial A
- INDB - Industrial B
- RESA - Residential A
- RESB - Residential B
- RESC - Residential C
- Historic

BURRILLVILLE  
RHODE ISLAND

NORTH SMITHFIELD  
RHODE ISLAND

PRODUCED BY  
**CAI Technologies**  
11 PLEASANT STREET, LITTLETON, NH 03581  
803.322.4543 • WWW.CAITECH.COM